



Mount Beauty & District Men's Shed Inc.

Strategic Plan

(2016/17 – 2020/21)

1. Introduction

This is the third 5 year plan for the Mount Beauty & District Men's Shed. The Group was formed in October 2011 and now has 65 individual members and three organisations as members. The new 24 metre by 9 metre Shed, in Tennis Court Avenue, was officially opened by the Member for Benambra, Bill Tilley, on the 19th February 2016.

The primary focus of this Plan is to ensure the sustainability and improvement of the established Shed. During the past four years much effort has been put in to building the Shed. We are now in a period of consolidation and retention of members. Over the next five years we will look to grow our membership in parallel with further expansion of our facilities.

The concept for the Mount Beauty & District Men's Shed is similar to the other 1000+ Sheds established across Australia. There are 120,000 Shed members nationwide. The Shed is affiliated with the Victorian Men's Shed Association and the Australian Men's Shed Association, and also receives support and guidance from Alpine Health.

The main purpose of the Shed is to support the health and well-being of men, particularly those aged over 50, who live in the Upper Kiewa Valley. The age profile from the 2011 census indicates that 26% of the local population (583) are men aged 45 and older. Many of the members have lived in the area for decades and previously worked on the Kiewa Hydro-electric Scheme or in the now defunct logging and tobacco farming industries. Mount Beauty is a remote locality and does not have many of the facilities and activities that larger centres are able to offer older men. The Shed also provides a workshop facility for other community organizations in Mount Beauty.

Over the past two decades Mt Beauty and the surrounding communities have experienced continued hardship with drought, industry demise, floods and three bushfires. In recent times the dairy industry has suffered from falling milk prices. The Shed program provides the opportunity to assist our local men through the recovery processes.

The Mount Beauty & District Men's Shed currently has regular activities for members including monthly BBQ's, and health and other information sessions. Currently it is open for members on Tuesday's and Wednesday's. The range of activities is increasing.

This 5 year Plan (2016/17 – 2020/21) has been drafted in a similar format to previous Plans.

2. Mission Statement

"Mount Beauty & District Men's Shed is concerned with supporting men's health & well-being by providing men with a safe and busy environment in which they can improve their physical, mental & social health;

productivity; self worth; value to the community; connectivity to friends & giving increased purpose to their lives".

3. Objectives

The need for the Shed is demonstrated and supported by the experiences of established men's sheds throughout Australia. Most older men in rural areas feel comfortable in a shed where they can socialize, use their practical skills and contribute to the community, which in turn leads to their better health and well-being.

Specific objectives for the Mount Beauty and District Men's Shed are;

- To provide a venue for on-going social interaction among members;
- To develop a range of activities in which all members can participate;
- To develop and run programs that will contribute to better health and well-being of the members;
- To conduct a safe, well managed, and well operated community based men's shed;
- To maintain the sustainability of the Men's Shed;
- To retain members, as this is an important indicator of success
- To undertake community development and support activities;
- To organize mentoring opportunities

- To actively welcome new members and to be inclusive for all members.

4. SWOT Analyses

As part of the planning process, the Mount Beauty & District Men's Shed undertook a SWOT analyses. The output was recorded and summarised below;

Strengths

- Now have a good Shed in an excellent location
- Enthusiastic & proactive committee
- Good membership numbers
- Variety of skills & experience amongst members
- Good teamwork generated on larger projects
- Excellent website and good communications with members
- Good participation in regular BBQ's and morning teas
- Have a good working relationship with the Neighbourhood Centre (MOU)
- Well supported by Alpine Health
- Positive relationship with the Alpine Shire and AGL - Energy
- Active in the community and have good support from the community
- Holding a stock of tools and materials
- Proactive in sourcing funding opportunities and have a solid financial base
- Steady income sources eg. Footygate, Christmas decorations.

Weaknesses

- Limitations because of the age of members
- Low percentage of members involved in volunteering
- Limited range of activities for members
- Learning new skills not offered to members
- Activities and meetings held during normal work hours, excludes men in the workforce
- Not building up "social capital" through volunteering in the community
- Some non-compliance with agreed health & safety procedures
- No succession planning for leadership/committee roles
- Space limitations, particularly for storage

Opportunities

- Ongoing assistance from the Shire
- Loans/gifts from benefactors possible
- Grants from Governments, Banks, AMSA, etc may be available
- Support from Rotary, Lions, U3A, Senior Citizens, etc
- A range of fund raising activities including joint ventures with other clubs
- Manufacture and renovate items for sale
- Invite special needs groups to participate (maybe separate sessions)
- Invite Valley farmers to become involved
- Provide out of normal work hours opening times
- Facilitate recruitment of men with limited confidence in their workshop skills
- Run specific skills sessions, maybe outside the Shed's normal work hours
- Large potential membership in the community
- Expand Shed space by extensions and/or separate building (STCA)

Threats

- Serious accident occurs in the Shed
- Serious OH&S non-compliance
- Vandalism or theft of shed/equipment
- Average age of members is increasing
- Risk of member to member friction unable to be resolved
- Risk of reputation trashing in the community
- Overlap with a commercial operator causing problems
- Opposition to the Shed's activities
- Major reduction in membership numbers
- Unable to get enough volunteers for critical activities
- Health problems with key members
- Burn out in Shed leaders resulting in the Committee folding
- Lack of succession planning
- Shire support could disappear
- Loss of key income streams e.g. Footygate
- Competition/overlap by NHCentre, U3A,etc
- Funding shortfalls, Shed becomes unviable
- Loss of the use of the Storage Shed

4. Key Elements

Following on from a review of the Mission Statement, Objectives and then updating the SWOT Analysis, a range of new initiatives have been listed.

(a) New Initiatives

- Increased storage area,
- Provide for more welding/blacksmith space,
- Small engine repair bay
- Expanded social activity space,
- Provide more facilities for non workshop activities, eg passive games.

(b) Program Schedule

2016/17 – Fencing and landscaping	\$1,000
Dust extraction, lighting	\$7,000
Shade Sail on end of the Shed	\$6,000
2017/18 – Skillion extension on west side	\$22,000
2018/19 – Planning & design for new building	\$5,000
2019/20 – New 12m x 6m building	\$30,000
2020/21 – Fit out, equip new building eg aircon.	\$10,000

© Expenditure Budget (Capital & Operating)

The following budget estimates indicate the capital and operating costs associated with the Shed. Operating expenditure includes insurance, water rates, site & building maintenance, power, telecommunications, lease rental, events & activities, consumables, affiliation fees, and administration costs.

Year	Capital Expenditure	Operating Expenditure
2016/17	\$14,000	\$9,500
2017/18	\$22,000	\$9,500
2018/19	\$5,000	\$9,500
2019/20	\$30,000	\$9,500
2020/21	\$10,000	\$9,500
Totals	\$81,000	

(current day dollars)

(d) Funding Opportunities

To continue as a sustainable organization the Mount Beauty & District Men’s Shed needs to generate ongoing revenue to at least cover the annual operating costs. In regard to the sizable capital funds required to deliver the plan, substantial grants will

be needed to supplement the Shed's fundraising and in kind contribution to the proposed capital projects.

The Shed will continue to be active in seeking funds from all three tiers of Government. It is recognized that because of the rapid growth in the number of Men's Sheds across Australia, there will be strong competition for funding.

The Shed will also source funds from philanthropic organisations such as The *Foundation for Rural & Regional Renewal*, from residents and businesses via donations, membership fees, fees for maintenance services and as well as a range of fundraising activities.

5. Outcomes

Men's sheds have been particularly successful in attracting older men including those who have proved difficult to engage through conventional health, employment, education and training initiatives. The Upper Kiewa Valley with its large demographic of elderly men is no different to other parts of Australia. There are a number older men in the community who are facing issues associated with significant change, including ageing, health, retirement, isolation, unemployment, disability and separation. The shed facility provides the venue to share those life experiences in a more relaxed environment.

The development and local management of a Shed in Mount Beauty aims to provide the following outcomes:

For the Men

- A place to be yourself and do what you want, when you want, how you want;
- Pursue hobbies, pastimes and interests;
- Meet other men to whom you can relate to;
- Ideas exchange;
- A place to learn;
- A place to teach;
- Someone who will listen and not judge;
- Someone who understands;
- Talk shoulder to shoulder;
- Find mateship, camaraderie and fellowship.

For the Community

- Utilising skills that may have been hidden and unused;
- Construction of community projects that may have been unaffordable;
- Some of the problems that older men suffer can be addressed and referred;

6. Community Support

The Mount Beauty & District Men's Shed has received very good support from many organizations and businesses to date. This has been in the form of donations, a loan of facilities/equipment, promotion, etc. Supporters include;

- Alpine Health
- Alpine Shire
- UKV Lions (member)

- Rotary Club of Mt Beauty (member)
- Senior Citizens Club
- U3A
- Alpine Radio
- Probus
- A.L.P.S. (Local women's group)
- RSL
- Golf Club
- AGL (Kiewa Hydro-electricity Scheme owners)
- Mt Beauty Medical Centre (member)
- Mt Beauty Supermarket
- Mt Beauty Hardware & Drapery
- Bendigo Bank
- Mt Beauty Sawmill

In addition, many local people have donated equipment and materials to the Shed.

7. Membership

The Mount Beauty and District Men's Shed has 68 members. The target is to increase this number as we increase the size of the facilities.

Most members are individual (65) but there are some local businesses and the two main service clubs (Lions & Rotary) that have also joined.

8. Programs & Activities

The Shed conducts four main categories of activity:

- Personal projects;
- Shed improvement projects;
- Projects for individual people in the local community;
- Community involvement projects.

Members are invited to become involved in any or all of these according to their own capability or interest. Alternatively, they can just come to the shed and have a chat with friendly guys as they go about their tasks or share a bit of company, either over a cuppa, or working on a project.

Good health is based on many factors including feeling good about yourself, being productive and valuable to your community, connecting to friends and maintaining an active body and an active mind.

Becoming a member of a Men's Shed gives a man that safe and busy environment where he can find many of these things in an atmosphere of old-fashioned mateship. And, importantly, there is no pressure. Men can just come and have a yarn and a cuppa if that is all they're looking for.

Members of Men's Sheds come from all walks of life - the bond that unites them is that they are men with time on their hands and they would like something meaningful to do with that time.

Some examples of activities conducted at Men's Sheds around the country are: general woodwork and carpentry, basic welding, toy making, maintenance of tools and your home machinery, use of computers, trips, metalwork, card and board

games, cooking, BBQ's, voluntary community projects, information sessions on men's health, restoring furniture and toys, guest speakers, growing vegetables, Shed planning and improvements and of course good company and fellowship.

Examples of activities conducted to date by the Mount Beauty and District Men's Shed include;

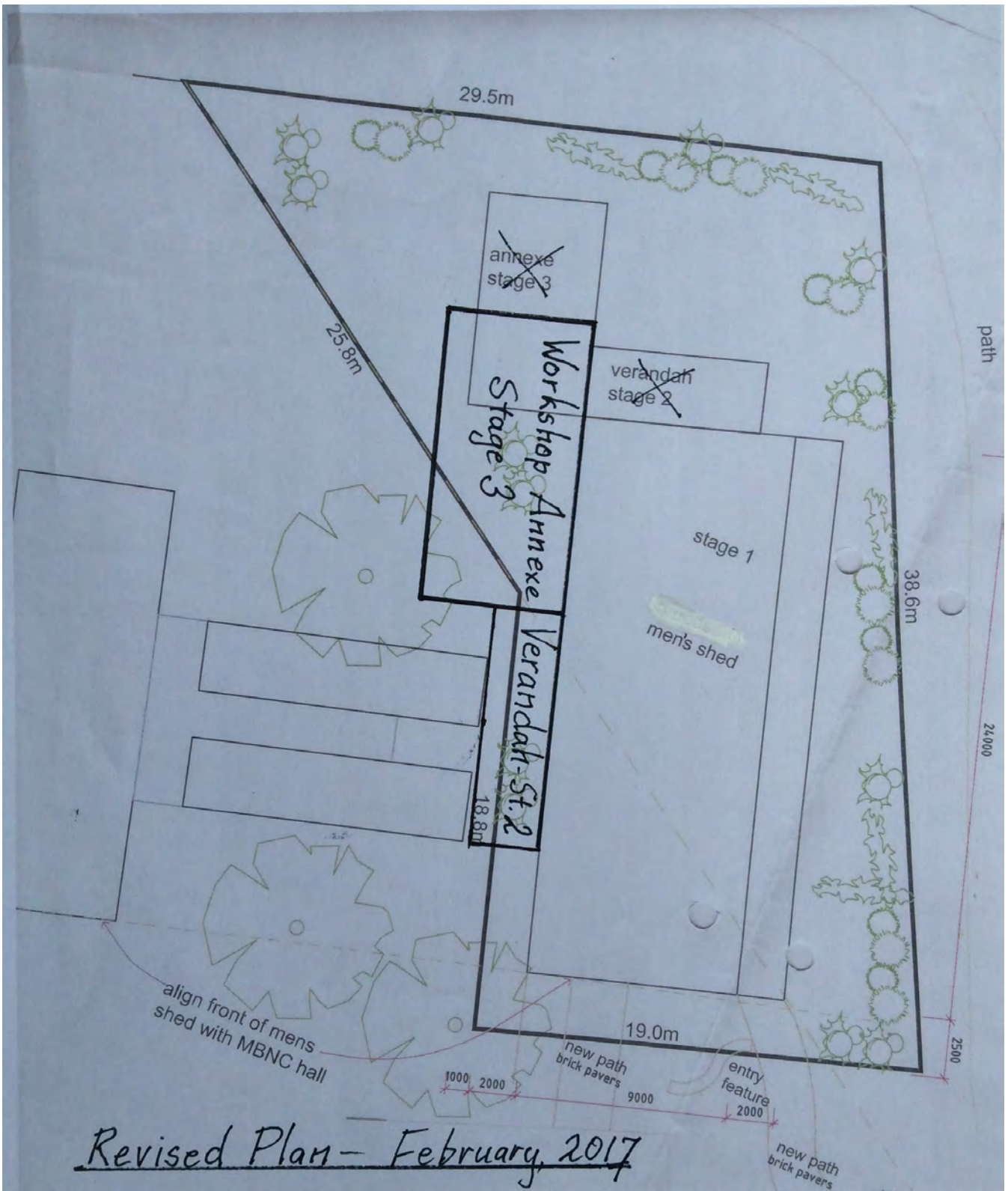
- *Monthly BBQ's* – opportunities for members to socialise, to keep members updated on Shed developments and to show members that the committee is very proactive in further developing the Shed;
- *Health sessions* (Spanner in the Works & activities associated with Health Week);
- *Mobile Phone Usage for Seniors workshops* conducted by VMSA and sponsored by Telstra;
- *Women in the Shed Skill Development Workshop Sessions.*

9. Some Design Options for Future extensions

In Section 4(a) some of the initiatives listed require a significant increase in Shed space. A number of possible options for extensions have been discussed by Shed members.

The sketch shown below shows the two directions where the Shed is likely to be extended. Stage 2 is a verandah on the western side of the Shed with approximate dimensions of three metres by ten metres.

Stage 3 is a fully enclosed new shed attached to the existing Shed, with connecting access via a new door through the toilet. Approximate dimensions of this extension are twelve metres by six metres, and roller doors at the northern and southern ends may be included. The current proposals are drawn over the original planning document, which was approved in 2014 with an expiry date of 2018. We may have to seek an amendment to the Planning Permit for these extensions.



Mount Beauty & District Men's Shed Inc.

10. Action Plan – January 2017 to 2020/21

Item	Recommended Action	Responsibility	Year*					~Cost
			1	2	3	4	5	
Master Plan & Action Plan								
1	<u>Master Plan</u> to include: mission statement, objectives, key elements (program schedule, costs and funding possibilities, outcomes, community support, membership and proposed, programs, activities & services. This <u>Action Plan</u> sets out the future improvements)	Ian Howley & Committee	√ 31/03/17 3rd Plan	√				N/A
The Main Shed...								
2	Obtain Alpine Shire approval of plans plus the necessary planning permits for verandah addition.	Ian Howley	---	√ 31/8/17				N/A
3	Construct the verandah	Builder/Shed members		30/06/18				\$22,000
4	Obtain Alpine Shire approval to construct the Shed annexe	Ian Howley			31/12/18			\$5,000
5	Construct the Shed annexe	Builder/Shed members				31/12/19		\$30,000
6	Fit out the new annexe	Members					31/12/20	\$10,000
Store Shed								
7	Renegotiate the MoU with Alpine Shire fir the use of the old store shed. The current agreement expires April, 2019.	Committee			April, 2019			N/A

Year 1 – 2016/17